

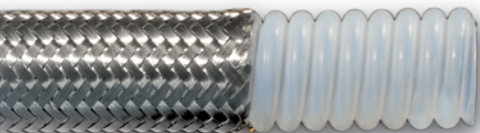
ULTRAFLEX™

Heavy Wall for Flare-Thru Fittings
and
Applications Requiring Vacuum Resistance

THE SEVERE SERVICE STANDARD

HEAVY DUTY APPLICATIONS

UltraFlex heavy duty hose is made with the thickest, seamless PTFE liner in the industry and offers the largest size range (1/2" - 6") which makes it ideal for nearly all demanding high purity and chemical applications. The open pitch, spiral convolutions facilitate cleaning because they're self-draining, and the tight bend radius of UltraFlex hose is perfect for space-constrained locations. To ensure continuous fluid contact with PTFE throughout the hose assembly, the PTFE liner can be cuffed and flared through for a continuous fluid conduit.



316 Stainless Steel Braid
Pure PTFE



316 Stainless Steel Braid
Static - Dissipating PTFE



Polypropylene Braid
Pure PTFE



Polypropylene Braid
Static - Dissipating PTFE

OTHER BRAID OPTIONS AVAILABLE

ULTRAFLEX ADVANTAGES

Corrosion Resistant

PTFE is fully resistant to the broadest range of industrial chemicals and has a zero corrosion rate with lower life cycle costs.

Cleanable

Non-Stick, low porosity tube is self cleaning and does not trap bacteria and can be cleaned with steam, detergents, caustics or solvents.

Sanitary

FDA- approved materials meet or exceed Pharmacopoeia Class VI and 3A standards.

Compatible

Will not contaminate or impart a taste, color, or odor to any media.

Flexible

Ultra flexible engineered design that resists cracking and stress corroding.

Durable

Engineered for extended use in hostile environments involving severe chemical, thermal, and mechanical stresses. Does not suffer from aging or embrittlement like rubber even with extreme thermal cycling.

Sanitary



FLARE-THRU FITTINGS

UltraFlex thick PTFE liner can be passed through the end fitting and flared radially outward against the sealing face to provide a continuous PTFE fluid conduit.

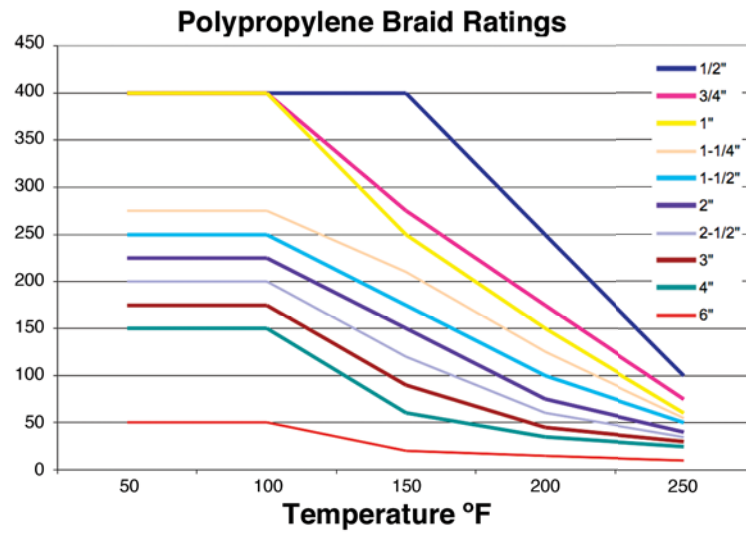
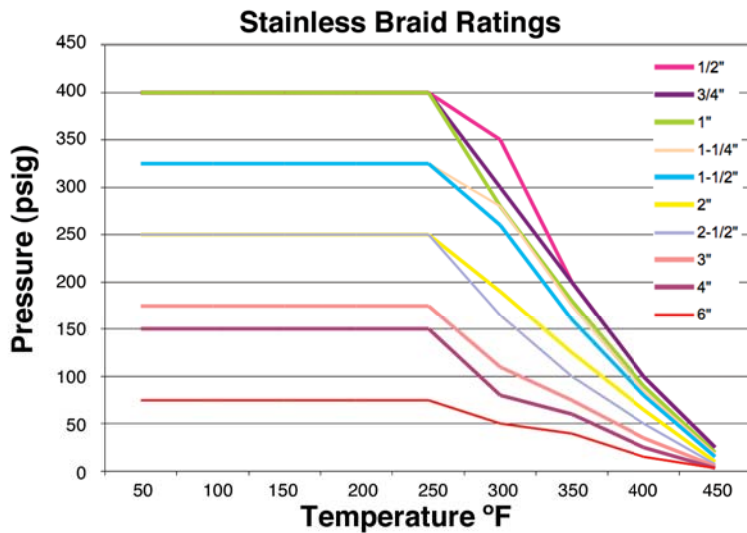


Flanges



Cam lock

Largest Size Range In The Industry 1/2" - 6"



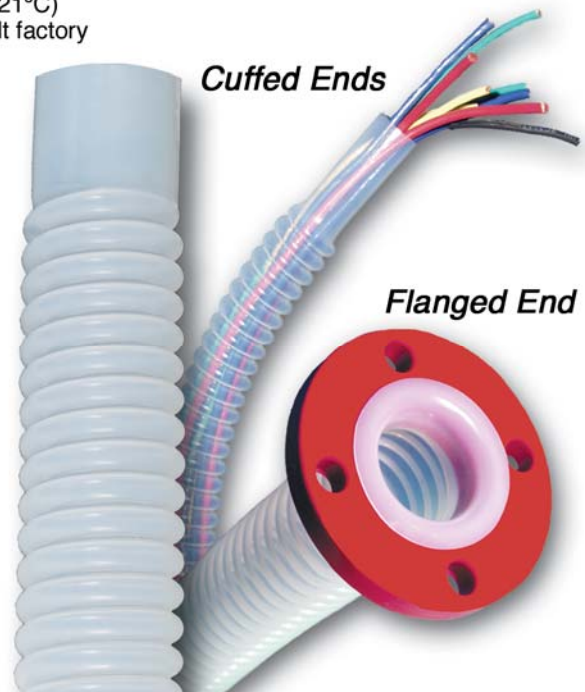
Stainless braid and bare hose temperature range: (-)65°F (-54°C) to (+)450°F (+232°C)
 Polypropylene braid temperature range: (-)20°F (-29°C) to (+)250°F (+121°C)

I.D. Nominal (inch)	OPERATING PRESSURE (psi)			Minimum Bend Radius (inch)	Vacuum Rating (in-Hg)	Weight Per Foot (lbs.)
	S.S. Braid	Polypro Braid	Bare Hose			
1/2"	400	400	40	1.75	29.9	0.20
3/4"	400	400	30	2.25	29.9	0.35
1"	400	400	30	2.50	29.9	0.50
1-1/4"	325	275	20	3.00	29.9	0.70
1-1/2"	325	250	20	3.25	29.9	0.80
2"	250	225	15	5.25	29.9	0.95
2-1/2"	250	200	15	8.50	29.9	1.50
**3"	175	175	15	9.50	24.0	1.79
4"	150	150	15	11.95	20.0	2.25
6"	75	50	5	15.50	15.0	3.50

Operating pressure ratings are one-fourth the minimum burst pressure at (+)70°F (21°C)
 Pressure and vacuum ratings are based at (+)70°F (21°C)
 ** 3" is available for full vacuum applications - consult factory

ULTRAFLEX™ Spiral Vent Tubing

Ultraflex heavy wall PTFE makes it ideal for vent tubing or flanged hose assemblies where line pressures are relatively low. UltraFlex Spiral Vent Tubing assemblies provide excellent flexibility, are light weight and have superior chemical resistance. Available in sizes 1/2" to 6" with cuffed, flanged or a variety of other end connections and materials.



PUREFLEX FITTINGS

THREADED FITTINGS		CAM LOCK		COMPRESSION, SPICE BUTTWELD	SANITARY		FLANGES
							
STYLE 03 Male Pipe (NPT) Hex	STYLE 04 Male Pipe (NPT)	STYLE 07 Female CAM Lock 'D'	STYLE 17 Female CAM Lock 'D' Reducer	STYLE 31 O-Ring Female Swivel 'D'	STYLE 40 Sanitary (Tri-Clamp)	STYLE 45 Bevel Seat Female	STYLE 05 Flange Retainer P Series Flange Retainer
							
STYLE 06 Female Pipe (NPT)	STYLE 30 JIC Female Swivel	STYLE 27 Female CAM Lock 'D' (PFA Encapsulated)	STYLE 08 Male CAM Lock 'E'	STYLE 38 Compression Adapter	STYLE 40U Sanitary Flare Thru (UltraFlex hose only)	STYLE 46 Bevel Seat Male	STYLE 25 Flange Retainer (PFA Encapsulated)
							
STYLE 33 Male Union (NPT)	STYLE 36 Female Union (NPT)	STYLE 28 Male CAM Lock 'E' (PFA Encapsulated)	STYLE 20 Male Flange Adapter (PFA Encapsulated)	STYLE 39 Compression Connector with Nut and Ferrule	STYLE 41 Sanitary Step-Up	STYLE 48 I-Line Male	STYLE 29 Flare Thru Flange (UltraFlex hose only)
							
STYLE 37 Female Swivel NPSH	JIC/NPT Adapter with PTFE Seal	STYLE 21 Female Flange Adapter (PTFE Encapsulated)	STYLE 02 CAM Spool Adapter	STYLE 18 Tube Buttweld	STYLE 42 Sanitary Mini	STYLE 49 I-Line Female	
							
		STYLE 22 CAM Spool Adapter (PFA Encapsulated)		STYLE 19 Pipe Buttweld		STYLE 44 Sanitary X Male Cam	

CNC Machining

PureFlex has (24) CNC machining centers and manufactures the most diverse fitting and collar selection in the industry. Because of its machining expertise, PureFlex can also offer a wide range of materials including; Stainless steel, carbon steel, Monel, Hastelloy, titanium, solid PVDF, solid Polypropylene and any other plastic or alloy requested.



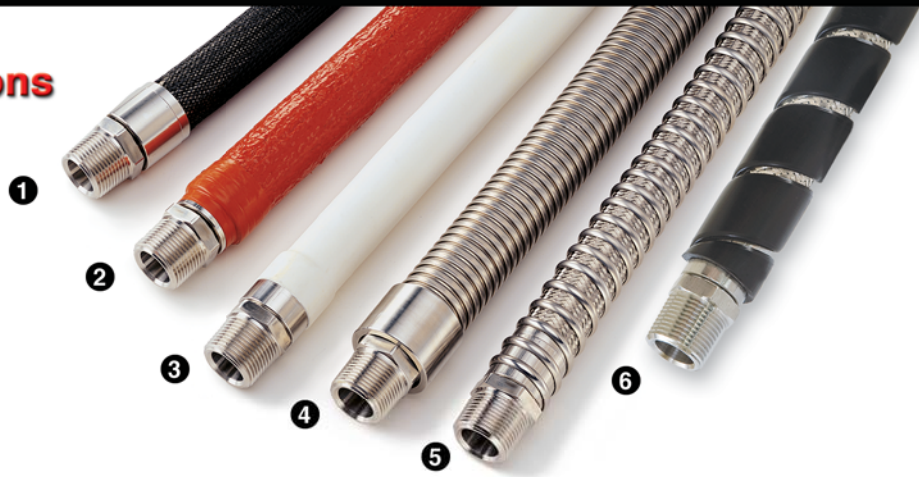
STYLE 11 Splice



OPTIONS

Hose Cover Options

- 1 **SCUFF SLEEVE**
Protects hose exterior from damage when dragged over rough surfaces
- 2 **FIRE SLEEVE**
Protects hose from extreme exterior temperatures. Can be used as insulation and protects personnel from extreme interior temperatures
- 3 **POLYOLEFIN**
Provides a smooth, cleanable covering over braided hose. Many colors available
- 4 **ARMOR GUARD**
Protects hose from kinking by not allowing it to exceed its bend radius
- 5 **SPRING GUARD**
Provides kink resistance and protects hose from damage when dragged over rough surfaces
- 6 **HDPE ARMOR**
Provides kink and wear protection during rough handling. Available in (8) colors for color coding and is the only protective cover that can be installed on an existing assembly.



Electrically Heated Hoses & Controls



Consult Factory for more information

Custom Fabricated Assemblies

MultiFlex hose with integral FEP sight gauge shown



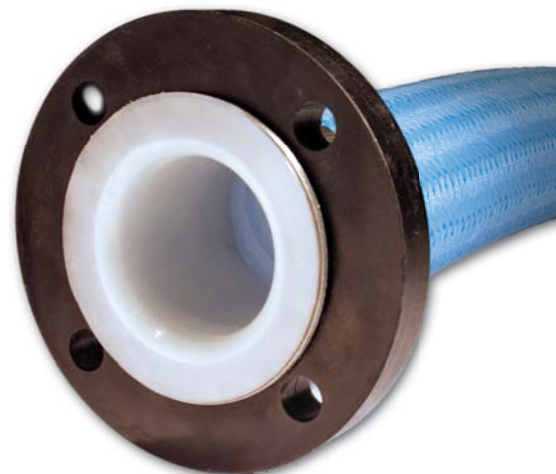
PureFlex acid etches a unique serial number on every assembly 3/4" and larger. Other special tagging available



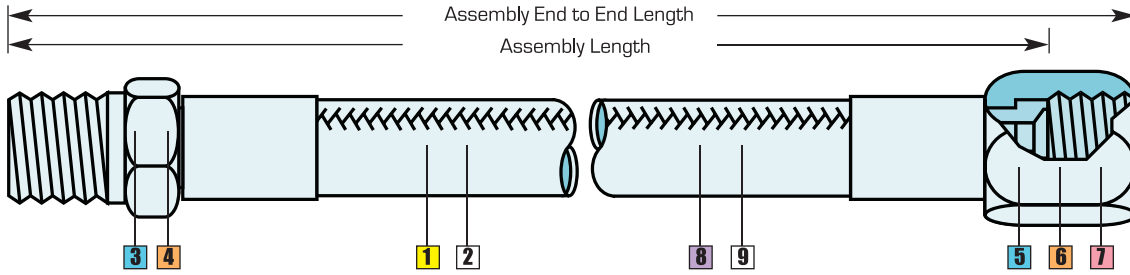
Durcor-62™ Composite Flanges



- **Strong As Steel**
- 1/4 The Weight Of Stainless
- Class 150 Rated
- ANSI B16.5
- (-)60°F to (+)300°F
- Lower Cost Than 316s.s.
- Lower Transportation Cost
- Lower Installed Cost
- Lower Life Cycle Cost
- **Zero Corrosion Rate**
- 10 Year Warranty



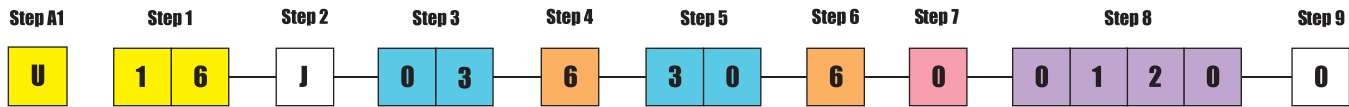
HOW TO ORDER



ULTRAFLEX HOSE ASSEMBLY NUMBERING SYSTEM

Steps to order a 1" UltraFlex assembly with a length of 12", 316SS male NPT one end, 316SS JIC other end. No options.

Sample part number: **U16J03630601200**



STEP A1 Hose Series

U = UltraFlex
M = MultiFlex
P = ProFlex

STEP 1 Determine I.D. of UltraFlex tube: 16 = 1"

08 = 1/2"
12 = 3/4"
16 = 1"
24 = 1-1/2"
32 = 2"
48 = 3"
64 = 4"

STEP 2 Determine hose product code: J

U = Bare
J = SS Braid
P = PP Braid
S = Special

STEP 3 Determine fitting style of 1st end: 03 = Male NPT

Threaded
03 = Male pipe hex NPT
04 = Male pipe NPT
06 = Female pipe NPT
30 = JIC female swivel
33 = Male union (NPT)
36 = Female union (NPT)
37 = Female swivel NPSH

Flanges
05 = Flange retainer
15 = Flange retainer P-series
25 = Enc. flange retainer
29 = Flare thru flange

Camlock
07 = Female cam lock "D"
27 = Enc. female cam lock "D"
08 = Male cam lock "E"
28 = Enc. male cam lock "E"

Compression
31 = O-ring female swivel "D"
38 = Compression adapter
39 = Compression connector
w/nut & ferrule

Buttweld
18 = Tube buttweld
19 = Pipe buttweld

Sanitary
40 = Sanitary tri-clamp
40U = Sanitary flare thru
41 = Sanitary step-up
42 = Sanitary mini
48 = Hine male
49 = Hine female
45 = Bevel seat female
46 = Bevel seat male

STEP 4 Determine fitting material: 6 = 316SS

4 = 304SS
6 = 316SS
C = Carbon steel
T = TFE encapsulated
H = Hastelloy
M = Monel
A = Alloy 20
K = Kynar
P = Polypropylene

STEP 5 Determine fitting style of 2nd end: 30 = JIC

Threaded
03 = Male pipe hex NPT
04 = Male pipe NPT
06 = Female pipe NPT
30 = JIC female swivel
33 = Male union (NPT)
36 = Female union (NPT)
37 = Female swivel NPSH

Flanges
05 = Flange retainer
15 = Flange retainer P-series
25 = Enc. flange retainer
29 = Flare thru flange

Camlock
07 = Female cam lock "D"
27 = Enc. female cam lock "D"
08 = Male cam lock "E"
28 = Enc. male cam lock "E"

Compression
31 = O-ring female swivel "D"
38 = Compression adapter
39 = Compression connector
w/nut & ferrule

Buttweld
18 = Tube buttweld
19 = Pipe buttweld

Sanitary
40 = Sanitary tri-clamp
40U = Sanitary flare thru
41 = Sanitary step-up
42 = Sanitary mini
48 = Hine male
49 = Hine female
45 = Bevel seat female
46 = Bevel seat male

STEP 6 Determine fitting material: 6 = 316SS

4 = 304SS
6 = 316SS
C = Carbon steel
T = TFE encapsulated
H = Hastelloy
M = Monel
A = Alloy 20
K = Kynar
P = Polypropylene

STEP 7 Determine flange material: 0 = None

0 = None
D = Ductile iron
C = Carbon steel
4 = 304SS
6 = 316SS
K = Kynar
P = Polypropylene

STEP 8 Determine overall length of UltraFlex hose in inches: 0120 = 12"

Last digit in 1/8th
increments.

STEP 9 Determine options: 0 = None

0 = None
B = Conductive hose liner
Z = 300# Flg
L = Locking female cam
S = Spring guard
A = Armor guard
F = Firesleeve
P = Polyolefin cover
T = TFE shrink cover
H = Hypalon cover
N = Nylon scuff guard
D = HDPE Armor

PureFlex®, Inc. information is based on technical data and testing that PureFlex®, Inc. believes to be reliable. It is intended for use by persons having technical skill, at their own discretion and risk. Since conditions of product are outside PureFlex®, Inc. control, PureFlex®, Inc. makes no warranties, express or implied, and assumes no liability in connection with any use of this information. PureFlex®, MultiFlex™, ProFlex™, are trademarks of PureFlex®, Inc. Kynar® is a registered trademark of ELF Atochem. All products are made in U.S.A. Monel® is a registered trademark of Huntington Alloys. Hastelloy® is a registered trademark of Cabot Corporation.

4855 Broadmoor Ave.
Kentwood, MI 49512
Phone: (616) 554-1100
Fax: (616) 554-3633
Web: www.pureflex.com

