

# TODO®

*For safe fluid handling*

## BALL VALVES



### TODO® BALL VALVES

These lightweight ball valves were the first products to be developed by TODO® and offer obvious weight saving benefits to the road tanker industry.

They are also used in a variety of fixed plant and mobile fuelling applications, especially where compartment switching is required.

A wide selection of end connectors are available and due to the simple sandwich design, speedy valve changeover is achievable.

All sizes are available with pneumatic actuation in either single or double acting form.



## FEATURES

- Valve Body and Ball in Aluminium.
- Easy to service.
- Ballsealing in PTFE.
- Will operate under pressure and flow.
- Extremely reliable, very few moving parts.
- Robust construction.
- Available with handle or actuator.

## TECHNICAL DETAILS

Sizes:	2" (DN 50)- 4" (DN 100).
Materials:	Aluminium alloy.
Seals:	FKM (Viton®), PTFE. Other materials on request.
Working pressure:	PN 10.
Test pressure:	PN 15.
Safety factor:	5:1.
End connections:	BSP- and NPT-threads. Weld prepared in aluminium or steel. TW-flange in aluminium. Other threads and flanges on request.

Viton® and is a registered trademark of DuPont.

## CERTIFICATES / APPROVALS

European directives 97/23/EC (PED).  
ATEX compliant.  
Manufactured under EN ISO 9001:2000.





## STRAIGHT BALL VALVES SIZE RANGE



4" ball valve  
with actuator



3" ball valve



2" ball valve

## TWO-WAY BALL VALVES SIZE RANGE



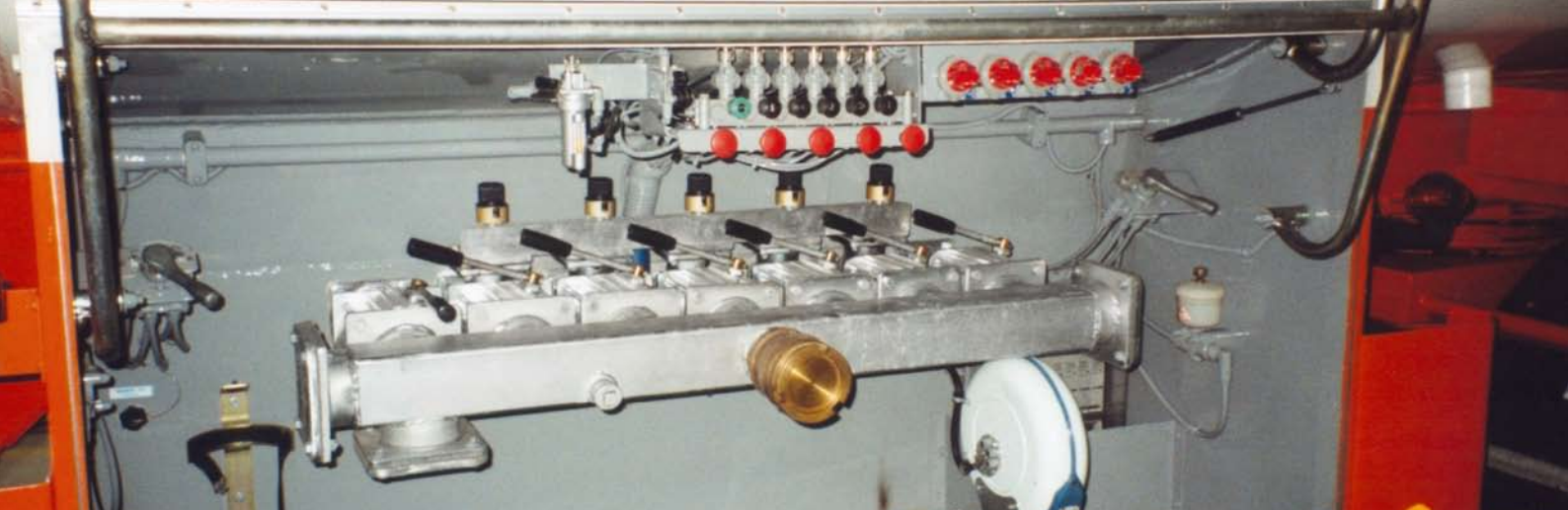
4" ball valve



3" ball valve  
with actuator



2" ball valve



## TODO® PRODUCTS OVERVIEW



**TODO-MATIC®** The first choice for the safe handling of hazardous, valuable or environmentally sensitive media. TODO-MATIC® are available in aluminium, gunmetal and stainless steel 316L with special materials such as hastelloy C276 available to order.  
*Sizes: 1" (DN 25) to 6" (DN 150).*



**TODO-GAS®** The TODO-GAS® couplings are designed especially for the transfer of LPG in both liquid and vapour phases. The couplings are available in stainless steel and brass / gunmetal with thread or flange connection. Handling and operation are as simple as for the TODO-MATIC® DRY-BREAK® coupling.  
*Sizes: 1" (DN 25), 2" (DN 50) and 3" (DN 80).*



**TODO® SAFETY BREAK AWAY couplings** Designed specifically to minimise spillage and damage associated with drive / pull away incidents. Also allows rapid removal of the mobile tankage in emergency situations. The coupling automatically senses an excessive load, closes its valves and then permits disconnection. Very high flow rate / low pressure drop. *Sizes: 2" (DN 50) and 3" (DN 80).*



**TODO-45 aviation couplings** An ISO 45 standard ground unit from TODO® and a special version of the TODO-MATIC® 2½" coupling available for connection to ground units conforming to standard ISO 45. This gives, for the first time, an economical alternative to ISO 45 standard hose couplers for aviation fuel transfers.



**PTC - Safety Pressure Tight Cap** The TODO® PTC is specifically designed to enhance operator safety and containment security in chemical and gas transport. Designed in close collaboration with leading chemical and gas companies, the PTC offers safety and operational benefits beyond those offered by existing closure technologies. *Sizes: 2" (DN 50) to 4" (DN 100).*



**BALL VALVES** These lightweight ball valves were the first products to be developed by TODO®. This valve offers obvious weight saving benefits for the road tanker industry but can also be used in a variety of plant applications. A wide selection of end connectors are available and valve changeover is rapid due to the simple sandwich design. All sizes are available with pneumatic actuation in either single or double acting form. *Sizes: 2" (DN 50) to 4" (DN 100).*



**FUEL NOZZLES** The TODO® fuel delivery nozzles are specifically designed to deliver high volumes with total security. Rugged cast aluminium alloy body, high strength swivel and robust handle all help this nozzle to offer reliable long term performance.  
*Size: 1½" (DN 40).*



**API couplings** TODO® API hose couplers and tank adaptors are interchangeable with other products manufactured to standard API RP 1004. The TODO® hose coupler is a high pressure design with five claw closure connection for strength and two interlocks for security and safety. The moulded lipseal configuration is used for long leak-free performance. TODO® API tank adaptors are available with or without operating handles or sightglasses.  
*Size 4" (DN 100).*



**SWIVELS** Developed originally as part of the TODO-MATIC® coupling construction then subsequently as a stand alone product, the TODO® swivel has proved itself in the toughest applications for over 20 years. Used mainly to allow free hose movement without imparting torque stresses to the assembly (one of the biggest causes of premature hose failure). *Sizes: ¾" (DN 19) to 4" (DN 100).*

### TODO SE

Tel. Int.: +46 (0)506 19940  
 Fax Int.: +46 (0)506 19944  
 Email: todo@todo.se

### TODO UK

Tel. Int.: +44 (0)1495 755 884  
 Fax Int.: +44 (0)1495 752 505  
 Email: todo@todo.co.uk

### TODO NL

Tel. Int.: +31 (0)72 57 27880  
 Fax Int.: +31 (0)72 57 27879  
 Email: todo@todobv.nl